

Academic Unit Structure

ACADEMIC UNIT ATTRIBUTES

- Unit Name: School of Graduate Studies
- Unit Status: Active
- Unit Type: Faculty (MDF)
- Parent Unit: University of Toronto
- Associated Unit: <none>
- Is Tri-Campus Grad Unit: No
- SGS Manages Graduate Search: No
- AAA Role Eligibility: Dean, Vice Dean, Associate Dean
- Campus: Tri-Campus
- Start date:
- End date: 31/12/9999
- Shortcode: SGS-U
- Is SGS Unit: Yes

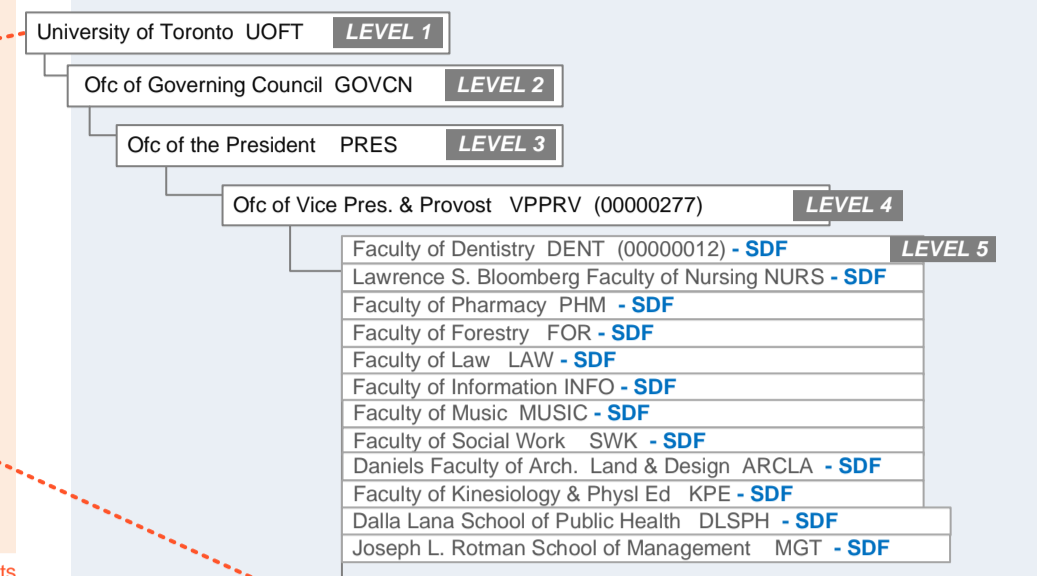
ACADEMIC UNIT ATTRIBUTES

- Unit Name: Department of English
- Unit Status: Active
- Unit Type: Graduate Unit
- Parent Unit: SGS-U
- Associated Unit: Department of English FAS, Department of English and Drama UTM, Department of English UTSC
- Is Tri-Campus Grad Unit: Yes
- SGS Manages Graduate Search: Yes (currently)
- AAA Role Eligibility: Graduate Chair
- Campus: Tri-Campus
- Start date:
- End date: 31/12/9999
- Shortcode: SGS-U
- Is SGS Unit: Yes

AAA TYPES

- Principal (campus) (15 = AAA Type) (#TBD)
- Principal (college) (15 = AAA Type) (#TBD)
- Vice-Principal (campus) (15 = AAA Type) (#TBD)
- Vice Principal (college) (15 = AAA Type) (#TBD)
- Dean (15 = AAA Type) (#TBD)
- Vice Dean (15 = AAA Type) (#TBD)
- Associate Dean (15 = AAA Type) (#TBD)
- Graduate Chair (15 = AAA Type) (#TBD)
- Academic Director (15 = AAA Type) (#TBD)
- Chair (15 = AAA Type) (#TBD)
- Chief Librarian (15 = AAA Type) (#TBD)
- Senior AAA Librarian (15 = AAA Type) (#TBD)

HRIS Org Structure (new elements in Orange)



Org Assignment % = 0.01%

Org Assignment % = 0.01%

Org Assignment % = 100%

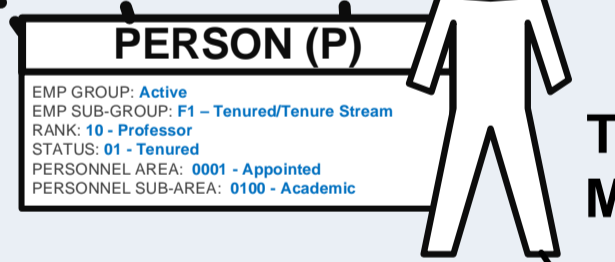
HRIS JOBS

- Principal (campus) (C = Job) (#TBD)
- Principal (C = Job) (#12)
- Vice-Principal (campus) (C = Job) (#TBD)
- Vice Principal (college) (C = Job) (#14)
- Dean (C = Job) (#16)
- Vice Dean (C = Job) (#20)
- Associate Dean (C = Job) (#18)
- Graduate Chair (C = Job) (#TBD)
- Academic Director (C = Job) (#22)
- Chair (C = Job) (#25)
- Chief Librarian (C = Job) (#193)
- Senior AAA Librarian (C = Job) (#TBD)
- Professoriate Tn-Strm (C = Job) (#31)

Faculty members in AAA roles are eligible for pensionable stipends. Pensionable stipends are paid via the wage type 0120 that is entered into info type 0014.

Recurring Payments (0014)

Start Date: _____
 End Date: _____
 Wage Type: _____
 Amount: _____



Tenured Faculty Member Serving as Chair

Address Book Info

Address: _____
 City: _____
 State: _____
 Zip: _____
 Phone: _____
 Email: _____

This note reflects the fact that the FB Employee Sub Group is no longer used to identify AAA's in HRIS for any purpose including the controls for pensionable stipends.



LEGEND

